



Genset

Model	JHY5-1500GF
Voltage	230/400V
Frequency&Speed	50HZ 1500RPM
Prime Power	1512kW/1890kVA
Standby Power	1665kW/2081kVA

General Engine Data

Main technical parameters

Number of cylinders	16
Configuration	V, 90°
Aspiration	Turbocharged, water-air intercooled
Combustion system	Direct injection
Compression ratio	14:1
Bore	152 mm
Stroke	180 mm
Displacement	52.26 L
Rotation	Counterclockwise (viewed from the flywheel end)
Firing order:	
A1-B6-B4-A6-A4-B7-A3-B8-B2-A8-A2-B5-B3-A5-B1-A7 Viewed from the back end: numbered starting from 1, with A for left side, and B for right side.	
Dry weight (excluding radiator)	5600 kg
Wet weight (excluding radiator)	6050 kg

Overall dimensions

Length (from the fan to the flywheel housing)	2,800 mm
Width	1,700 mm
Height	1,950mm

Gravity center coordinate (dry engine, with the center of the end face of the flywheel shell as the origin)

Fuel consumption

Note: The diesel density is 0.835 kg/L.

Conditions	1500 r/min	
	g/ (kW·h)	L/h
Standby power	210	465.3
Prime power	205	412.5
75% of prime power	205	309.3
50% of prime power	215	216.3

- **Engine:** Yuchai YC16VTD2270-D30
- **Alternator:** Stamford/Leroy Somer /Hengsheng
- **Controller:** DeepSea/SmartGen /DEIF/ComAp

From the rear end face of the flywheel	1043mm
Height relative to the center of the crankshaft	172 mm
Centerline deviation relative to the crankshaft center gravity	-11mm

Shafting rotation inertia

Engine	18.63 kg·m ²
Flywheel	11.34 kg·m ²

Performance rating

Speed drop	0.3%
Speed fluctuation rate	0.5%
Speed governing type	Electronic control

Test conditions

Ambient temperature	25°C
Atmospheric pressure	100 kPa
Relative humidity	30%
Max. operating intake resistance	≤5 kPa
Exhaust backpressure limit	≤10 kPa
Fuel temperature (fuel inlet pump)	38±2°C

Note: Unless otherwise specified, the data of this list of parameters are measured under these test conditions. If the engine is used under other test conditions other than those described above, proper adjustment shall be made according to the actual environment. For specific details, please contact Yuchai technical service department.

Electric system

Type	Negative grounding
------	--------------------

Charging alternator 24 V

Voltage	28 V
Output current	55 A

Starter (24 V/12 V)

Type	Electric start, 2
Power	8.5 kW
Number of flywheel teeth	141
Number of starter teeth	10

Cooling system

Total coolant capacity	554 L
Engine coolant capacity.High temperature: 140 L, low temperature: 30 L	
Radiator coolant capacityHigh temperature: 182 L, low temperature: 162 L	
Pipeline coolant capacity	40 L
Max. water outlet temperature of engine (high temperature water passage)	≤97 °C
Max. inlet temperature of engine (low temperature water passage)	≤65 °C
Pressure difference between inlet and outlet of water pump (max. hydrostatic head)	150 kPa
Thermostat operation temperature	
Initial opening temperature (75±2) °C, full opening temperature (85±2) °C	
Max. water temperature rise:	
- Standby power	13 °C
- Prime power	12 °C

High temperature radiator

Cooling area	665 m ²
Dry weight	920 kg
Material	Aluminum
Number of lines	1line
Density of core	cooling fins/inch
Width of core	2220 mm
Height of core	2200 mm
Min. pressure of pressure cover	(90±5) kPa

Material	Nylon
Number of blades	8
Blowing/suction	Blowing type

Intake system

Air cleaner

Max. intake resistance:	
- Clean air cleaner	3.5 kPa
- Dirty air cleaner	5 kPa
- Air cleaner type	Dry paper element

Inclination

Transverse inclination/longitudinal inclination (oil sump capacity: 280 L)	5°/5°
--	-------

Fuel system

Injection system	High pressure common rail
------------------------	---------------------------

Fuel injector

Type	Electronically-controlled injector, multi-hole injection
Fuel injector opening pressure	Electronically-controlled

Fuel pump

Drive mode	Gear drive
Fuel delivery pump flow @ 1,500 rpm	8.5 L/min
Max. fuel inlet temperature limit	70 °C
Allowed fuel inlet pressure (absolute pressure) at the front end of fuel delivery pump	(50~100) kPa
Max. fuel return pressure of fuel pump	30 kPa

Alternator

Pole No.	4-Pole
Exciter Type	Single bearing, Brushless, Self-excited
Power factor	0.8
Voltage adjust range	≤ 5%
Insulation Grade	H
Protection Grade	IP23/22
Phase / wire	3 phase 4 wires

- ✧ NEMAMG1.JIANGHAO,and ANSI standards compliance for temperature rise and motor starting.
- ✧ Sustained short-circuit current of up to 300% of the rated current for up to 10 seconds.
- ✧ Sustained short-circuit current enabling down stream circuit breakers to trip without collapsing the generator field.
- ✧ Self-ventilated and dripproof construction.
- ✧ Superior voltage waveform from two-thirds Pitch windings and skewed stator.
- ✧ Digital solid-state.volts-per-hertz voltage Regulator with +1% no-load to full-load regulation.

Control Panel



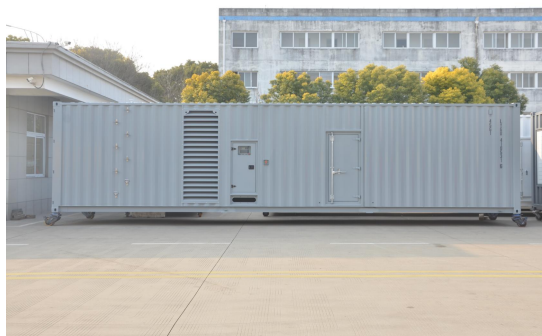
The control module gives digital readouts of:

Generator voltage;
Output frequency;
Engine speed;
Battery voltage;
Engine hours run.



Dimension:5200*2300*2510mm

Weight:12000kg



Dimension:12000*2400*2900mm

Weight:15800kg

Fuel Tank Capacity:1000-3000L

The **control panel** is an Digital Control Module suitable for a wide variety of single, diesel or gas, gen-set applications.

Monitoring an extensive number of engine parameters, the module will display warnings, shutdown and engine status information on the back-lit LCD screen and illuminated LEDs.

The control module has indicators for failure information:

Over speed/Low speed,
Emergency stop
Low oil pressure;
High water temperature
Failure to start
Battery charger failure

Automatic shutdown occurs under:

Low engine oil pressure;
High engine water temperature;
Over speed/Low speed;
Failure to start after three attempts.

Electrical system

- Maintenance-free and anti-explosion battery
- Standard breaker
- ABB breaker (optional)
- ATS (optional)
- Battery charger (optional)
- GMS monitoring (optional)

Packing

- Wrapping film packaging
- Tray packaging
- plywood box packaging

Jiangsu Jianghao Generator Co.,Ltd

Address: No.1 Xixu Road, Medical High-tech Zone,
Taizhou city, Jiangsu, China

Contact Person: Anthony Feng

Email: jhfsale@jhgenerator.com

WhatsApp: +86 18652649673

