



## Genset

Model	JHY-126GF
Voltage	277/480V
Frequency&Speed	60HZ 1800RPM
Prime Power	126kW/158kVA
Standby Power	139kW/173kVA

- Engine: Yuchai YC6B210L-D20
- Alternator: Stamford/Leroy Somer  
/Hengsheng
- Controller: DeepSea/SmartGen  
/DEIF/ComAp

## General Engine Data

### Main technical parameters

Number of cylinders	6
Configuration	Vertical, in-line
Aspiration	Turbocharged, air-air intercooled
Combustion system	Direct injection
Compression ratio	17.5:1
Bore	108 mm
Stroke	125 mm
Displacement	6.87L
Rotation	Counterclockwise (viewed from the flywheel end)
Firing order (viewed from the belt pulley end)	1-5-3-6-2-4
Dry weight (without radiator)	700 kg
Wet weight (without radiator)	760 kg

### Overall dimensions

Length (from front end of radiator to rear end of air filter)	1720 mm
Width	900 mm
Height (with radiator and mounting support)	1200 mm

### Centre of gravity (dry engine, with the center of the rear end face of the flywheel shell as the origin)

From the rear end face of the flywheel	412 mm
Height relative to the center of the crankshaft	142mm

### Fuel consumption

Note: The density of diesel is 0.835 kg/L.

Load condition	1800 r/min	
	g/(kW·h)	L/h
Standby	220.3	40.6
Prime	215.0	36.0
75% prime	212.7	26.7
50% prime	221.0	18.5

Centerline deviation relative to the crankshaft center gravity

36 mm

### Moments of rotation inertia

Engine	2.01 kg·m <sup>2</sup>
Flywheel	1.75 kg·m <sup>2</sup>

### Performance rating

Speed droop	≤0.5%
Steady state speed band	≤0.5%

### Test conditions

Ambient temperature	25 °C
Atmospheric pressure	100 kPa
Relative humidity	30 %
Max. operating intake resistance	≤5 kPa
Exhaust backpressure limit	≤10 kPa
Fuel temperature (fuel inlet pump)	38±2 °C

Attention: Unless otherwise explicitly specified, all parameter data are measured under standard test condition as above. If the engine is operated under other test conditions rather than the test condition above, it shall be adjusted properly according to the actual environment. Contact the Yuchai Technical Service Department for details.

### Electric system

Type	Negative ground
Charger	
Voltage	24V/14V
Output current	27A/90A
Starter	
Type	Electric start, 1
Voltage	24V/12V
Power	6 kW/5.5kW
Number of teeth of flywheel	110
Number of teeth of starter	11

## Cooling system

Total coolant capacity.....	31 L
Engine coolant capacity.....	12 L
Radiator coolant capacity.....	16 L
Pipeline coolant capacity.....	3 L
Engine max. outlet coolant temperature.....	99℃
Thermostat operation temperature	
Initial open.....	(70±2)℃
full open.....	<80℃
Max. coolant temperature rise:	
-Standby power.....	8.0℃
-Prime power.....	7.8℃

## Radiator

(drawing number: B7G20-1316100)	
Dry weight.....	75kg
Cooling area.....	40m <sup>2</sup>
Core material.....	Copper
Length of core.....	784 mm
Width of core.....	96 mm
Height of core.....	740mm
Min. pressure of pressure cap.....	(50±5)kPa
Coolant resistance limit.....	15 kPa

## Intercooler

Cooling area.....	20.84 m <sup>2</sup>
Core material.....	Copper
Width of core.....	784mm
Height of core.....	740 mm
Air resistance limit.....	10 kPa

## Coolant pump

Rotation speed.....	2730 r/min
Drive mode.....	Pulley driven

## Alternator

Pole No.	4-Pole
Exciter Type	Single bearing, Brushless, Self-excited
Power factor	0.8
Voltage adjust range	≅ 5%
Insulation Grade	H
Protection Grade	IP23/22
Phase / wire	3 phase 4 wires

## Intake system

### Air filter

Max. intake resistance:	
-Clean air filter.....	3.5 kPa
-Dirty air filter.....	.5 kPa
-Warning of intake resistance.....	6.2 kPa
-Air filter type.....	Dry-type, filter cartridge of paper

## Inclination

Transverse inclination/longitudinal inclination (volume of engine oil sump: 20 L).....	.10°/ 10°
----------------------------------------------------------------------------------------	-----------

## Fuel system

Injection system.....	Mechanical pump+electronic governor
-----------------------	-------------------------------------

### Injector

Type.....	Mechanical
Injector opening pressure.....	(23~24) MPa

### Fuel pump

Drive mode.....	Gear driven
Fuel delivery pump flow @1800 rpm.....	1.2l/min
Max. fuel inlet temperature limit.....	57 ℃
Allowed fuel inlet pressure of front end of fuel delivery pump (absolute pressure).....	(35~150) kPa
Maximum fuel return pressure of fuel pump.....	20 kPa

### Fuel filter

Rated flow.....	1.2 L/min
Max. original resistance.....	≤7.5 kPa
Water separation efficiency at the rated flow.....	≥95 %
Filter efficiency:	
For particles of 10 μm.....	≥96 %

- ✧ NEMAMG1.JIANGHAO,and ANSI standards compliance for temperature rise and motor starting.
- ✧ Sustained short-circuit current of up to 300% of the rated current for up to 10 seconds.
- ✧ Sustained short-circuit current enabling down stream circuit breakers to trip without collapsing the generator field.
- ✧ Self-ventilated and dripproof construction.
- ✧ Superior voltage waveform from two-thirds Pitch windings and skewed stator.
- ✧ Digital solid-state.volts-per-hertz voltage Regulator with +1% no-load to full-load regulation.

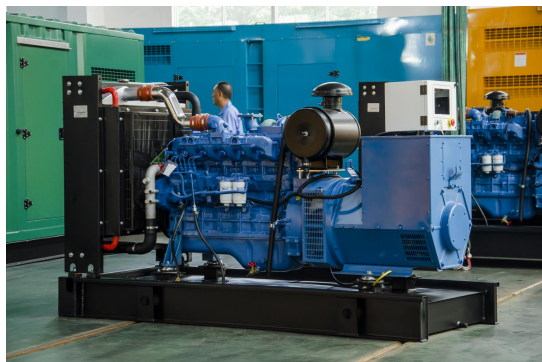


## Control Panel



The control module gives digital readouts of:

Generator voltage;  
Output frequency;  
Engine speed;  
Battery voltage;  
Engine hours run.



Dimension:2500\*980\*1600mm

Weight:1700kg



Dimension:3600\*1600\*1900mm

Weight:3500kg

Fuel Tank Capacity:550L

The **control panel** is an Digital Control Module suitable for a wide variety of single, diesel or gas, gen-set applications.

Monitoring an extensive number of engine parameters, the module will display warnings, shutdown and engine status information on the back-lit LCD screen and illuminated LEDs.

**The control module has indicators for failure information:**

Over speed/Low speed,  
Emergency stop  
Low oil pressure;  
High water temperature  
Failure to start  
Battery charger failure

**Automatic shutdown occurs under:**

Low engine oil pressure;  
High engine water temperature;  
Over speed/Low speed;  
Failure to start after three attempts.

## Electrical system

- Maintenance-free and anti-explosion battery
- Standard breaker
- ABB breaker (optional)
- ATS (optional)
- Battery charger (optional)
- GMS monitoring (optional)

## Packing

- Wrapping film packaging
- Tray packaging
- plywood box packaging

**Jiangsu Jianghao Generator Co.,Ltd**

Address: No.1 Xixu Road, Medical High-tech Zone,  
Taizhou city, Jiangsu, China

Contact Person: Anthony Feng

Email: [jhfsale@jhgenerator.com](mailto:jhfsale@jhgenerator.com)

WhatsApp: +86 18652649673

