



Genset

Model	JHW25-360GF
Voltage	400/230V
Frequency&Speed	50HZ 1500RPM
Prime Power	NA/NA
Standby Power	365kW/456kVA

- **Engine:** Weichai WP13D405E200
- **Alternator:** Stamford/Leroy Somer /Hengsheng
- **Controller:** DeepSea/SmartGen /DEIF/ComAp

General Engine Data

转速 Speed	发动机功率 Gross Engine Output		
	持续功率 kW COP kW	常用功率 kW PRP kW	备用功率 kW ESP kW
1500r/min	/	/	405

发动机类型 Engine Type 柴油机 Diesel Engine
气缸/气门数量 N° of Cylinders / Valves 6/24
气缸分布型式 Cylinders arrangement 直列 Line
缸径×行程 (mm) Bore x Stroke (mm) 127×165
排量(L) Displacement(L) 12.54
燃油系统型式 Fuel System 机械泵 Mechanical Pump
进气形式 Aspiration 增压中冷 Turbocharged and aftercooled
压缩比 Compression ratio 16
飞轮壳尺寸 Flywheel housing SAE1
飞轮尺寸 Flywheel 14"
飞轮齿圈齿数 N° of teeth on flywheel ring gear 136
飞轮转动惯量 (kg/m²) Inertia of flywheel (kg/m²) 1.34
曲轴转动惯量 (kg/m²) Inertia of crankshaft (kg/m²) 0.064
排放阶段 Emission standard 无排放 Non
发动机尺寸(长×宽×高) Overall Dimensions without radiator (L x W x H) (mm)
1556×817×1094 (以外形图为准 The outer chart shall prevail)
发动机干重 (kg) Engine dry weight (kg) 1000±50
不带辅助启动装置时最低冷启动温度 (°C) Min.cold start temperature without auxiliary starting
device(°C) -10
带辅助启动装置时最低冷启动温度 (°C) Min. cold start temperature with auxiliary starting device (°C)
..... -30
包装尺寸(长×宽×高) Packing size (L x W x H) (mm) 1910×1050×1300
运输重量 Packaging quality(kg) 1100

油底壳机油容量 (L) Oil capacity High (L)	36
怠速时机油压力 (kPa) Oil pressure in normal condition idle speed (kPa)	100~250
在额定转速下的机油压力 (kPa) Oil pressure in normal condition at rated speed	350~550
机油压力低报警值(kPa) Lowest oil pressure alarm value (kPa)	80
机油压力低停机值(kPa) Lowest oil pressure shutdown value (kPa)	80
额定工况主油道内机油温度范围 The oil temperature range of the main oil passage under rated working condition (°C)	85~105
机油流量 (L/min) Oil flow (L/min)	190
额定工况机油燃油消耗比 Oil fuel consumption ratio based on engine fuel consumption data under rated working condition	≤0.2%
电气系统电压 (负极接地) (V) Electrical system voltage (negative to ground) (V)	24
起动机功率(kW) Starter power (kW)	8.5
充电发电机额定电流 (A) Battery charger current (A)	70
启动回路最大电阻 (mΩ) Max. electric resistance of starting circuit (mΩ)	0.004
启动回路导线最小截面积(mm²) Min. sectional area of wire (mm²)	50
加热格栅工作电压(V)/电流(A) Heat The Grille Voltage(V)/Current(A)	/
允许最大排气背压 (kPa) Max. exhaust back pressure (kPa)	7.5
最大的排气温度 (涡轮前) (°C) Max. exhaust temperature before turbocharger (°C)	740
最大的排气温度 (涡轮后) (°C) Max. exhaust temperature after turbocharger(°C)	580
额定工况下排气流量 (kg/h) Exhaust flow @ PRP (kg/h)	1845
应急备用工况下排气流量 (kg/h) Exhaust flow @ ESP (kg/h)	1979
推荐排气管最小直径(mm) Min. diameter of exhaust pipe (mm)	100
涡轮增压器法兰处允许的最大弯矩(Nm) Max. bending moment of exhaust gas exit flange (Nm)	19

Alternator

Pole No.	4-Pole	
Exciter Type	Single bearing, Brushless, Self-excited	✧ NEMAMG1.JIANGHAO,and ANSI standards compliance for temperature rise and motor starting.
Power factor	0.8	✧ Sustained short-circuit current of up to 300% of the rated current for up to 10 seconds.
Voltage adjust range	≤ 5%	✧ Sustained short-circuit current enabling down stream circuit breakers to trip without collapsing the generator field.
Insulation Grade	H	✧ Self-ventilated and dripproof construction.
Protection Grade	IP23/22	
Phase / wire	3 phase 4 wires	
✧ Superior voltage waveform from two-thirds Pitch windings and skewed stator.		
✧ Digital solid-state.volts-per-hertz voltage Regulator with +1% no-load to full-load regulation.		

Control Panel



The control module gives digital readouts of:

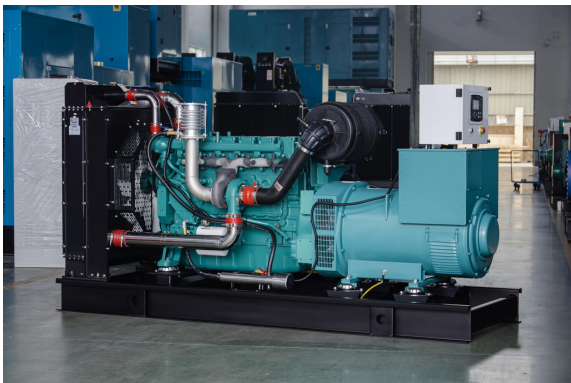
Generator voltage;
Output frequency;
Engine speed;
Battery voltage;
Engine hours run.

The **control panel** is an Digital Control Module suitable for a wide variety of single, diesel or gas, gen-set applications.

Monitoring an extensive number of engine parameters, the module will display warnings, shutdown and engine status information on the back-lit LCD screen and illuminated LEDs.

The control module has indicators for failure information:

Over speed/Low speed,
Emergency stop
Low oil pressure;
High water temperature
Failure to start
Battery charger failure



Dimension:3000*1050*1850mm
Weight:2600kg

Automatic shutdown occurs under:

Low engine oil pressure;
High engine water temperature;
Over speed/Low speed;
Failure to start after three attempts.

Electrical system

- Maintenance-free and anti-explosion battery
- Standard breaker
- ABB breaker (optional)
- ATS (optional)
- Battery charger (optional)
- GMS monitoring (optional)

Packing

- Wrapping film packaging
- Tray packaging
- plywood box packaging



Dimension:4000*1700*2000mm
Weight:4500kg
Fuel Tank:680L

Jiangsu Jianghao Generator Co.,Ltd

Address: No.1 Xixu Road, Medical High-tech Zone,
Taizhou city, Jiangsu, China

Contact Person: Anthony Feng

Email: jhfsale@jhgenerator.com

WhatsApp: +86 18652649673

