



Genset

Model	JHW25-250GF
Voltage	400/230V
Frequency&Speed	50HZ 1500RPM
Prime Power	NA/NA
Standby Power	288kW/360kVA

- **Engine:** Weichai WP10D320E200
- **Alternator:** Stamford/Leroy Somer
/Hengsheng
- **Controller:** DeepSea/SmartGen
/DEIF/ComAp

General Engine Data

转速 Speed	发动机功率 Gross Engine Output		
	持续功率 kW COP kW	常用功率 kW PRP kW	备用功率 kW ESP kW
1500r/min	/	291	320

发动机类型 Engine model柴油机 Diesel Engine
气缸/气门数量 N° of Cylinders / Valves 6/12
气缸分布型式 Cylinders arrangement直列 In-line
缸径×行程 (mm) Bore x Stroke (mm)126×130
排量(L) Displacement(L)9.726
燃油系统型式 Fuel System机械泵 mechanical pump

进气形式 Aspiration增压中冷 Turbocharged and aftercooled
压缩比 Compression ratio17
飞轮壳尺寸 Flywheel housing SAE1
飞轮尺寸 Flywheel 11.5' /14'
飞轮齿圈齿数 N° of teeth on flywheel ring gear 136
飞轮转动惯量 (kg/m²) Inertia of flywheel (kg/m²)0.95
曲轴转动惯量 (kg/m²) Inertia of crankshaft (kg/m²)0.35
排放阶段 Emission standard 无排放 Non
发动机尺寸(长×宽×高) (mm) Overall Dimensions with radiator (L x W x H) (mm)
.....1525×730×1063 (以外形图为准 The outer chart shall prevail)
发动机干重 (kg) Engine dry weight (kg) 875
不带辅助启动装置时最低冷启动温度 (°C) Min.cold start temperature without auxiliary starting
device(°C) -10
带辅助启动装置时最低冷启动温度 (°C) Min. cold start temperature with auxiliary starting device (°C)
..... -30
包装尺寸 Packing measurement (mm)1873×974×1300
运输重量 Transport weight (kg) 980

油底壳机油最小/最大容量 (L) Oil capacity Low / High (L).....	24
怠速时机油压力 (kPa) Oil pressure in normal condition idle speed (kPa)	100-250
在额定转速下的机油压力 (kPa) Oil pressure in normal condition at rated speed	330-550
机油低报警压力 (kPa) Lowest oil pressure alarm (kPa).....	80
机油低停机压力 (kPa) Lowest oil pressure shutdown(kPa).....	80
机油最高温度(°C) Max. oil temperature (°C).....	85-105
机油流量 (L/min) Oil flow (L/min).....	118
机油燃油消耗比 Oil fuel consumption ratio based on engine fuel consumption data	≤0.2%
喷油泵进油口最大进油阻力 (kPa) Max. restriction at fuel pump inlet (kPa)	18
喷油泵最大回油阻力 (kPa) Max. fuel return restriction (kPa)	22
燃油最高进油温度 (°C) Max. fuel inlet temperature (°C).....	50
供油流量 (kg/h) Fuel supply flow (kg/h).....	38.93 ~35.35
输油泵最小压力 (kPa) Min. pressure of fuel pump (kPa).....	35
燃油进油管最小直径 (mm) Min. diameter of inlet pipe (mm).....	12
燃油回油管最小直径 (mm) Min. diameter of return pipe (mm)	12
电气系统电压 (负极接地) (V) Electrical system voltage (negative to ground) (V)	24
起动机功率(kW) Starter power (kW)	5.4
充电发电机额定电流 (A) Battery charger current (A).....	55
启动回路最大电阻 (mΩ) Max. electric resistance of starting circuit (mΩ).....	4
启动回路导线最小截面积(mm²) Min. sectional area of wire (mm²)	50
加热格栅工作电压(V)/电流(A) Heat The Grille Voltage(V)/Current(A)	/
发动机噪声 (声功率级) (dB(A)) Diesel engine noise (Acoustic power level) (dB(A))	100.1

Alternator

Pole No.	4-Pole	
Exciter Type	Single bearing, Brushless, Self-excited	✧ NEMAMG1.JIANGHAO,and ANSI standards compliance for temperature rise and motor starting.
Power factor	0.8	✧ Sustained short-circuit current of up to 300% of the rated current for up to 10 seconds.
Voltage adjust range	≅ 5%	✧ Sustained short-circuit current enabling down stream circuit breakers to trip without collapsing the generator field.
Insulation Grade	H	✧ Self-ventilated and dripproof construction.
Protection Grade	IP23/22	
Phase / wire	3 phase 4 wires	
✧ Superior voltage waveform from two-thirds Pitch windings and skewed stator.		
✧ Digital solid-state.volts-per-hertz voltage Regulator with +1% no-load to full-load regulation.		

Control Panel



The control module gives digital readouts of:

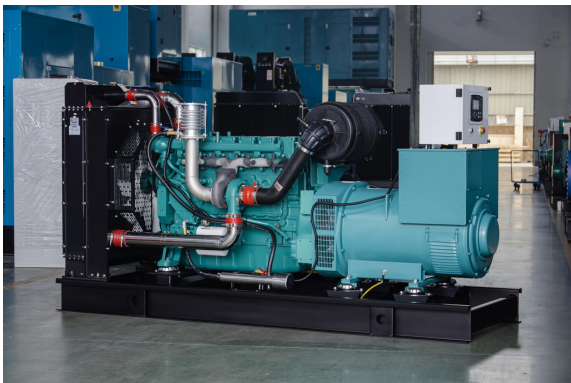
Generator voltage;
Output frequency;
Engine speed;
Battery voltage;
Engine hours run.

The **control panel** is an Digital Control Module suitable for a wide variety of single, diesel or gas, gen-set applications.

Monitoring an extensive number of engine parameters, the module will display warnings, shutdown and engine status information on the back-lit LCD screen and illuminated LEDs.

The control module has indicators for failure information:

Over speed/Low speed,
Emergency stop
Low oil pressure;
High water temperature
Failure to start
Battery charger failure



Dimension:3000*1050*1550mm
Weight:2700kg

Automatic shutdown occurs under:

Low engine oil pressure;
High engine water temperature;
Over speed/Low speed;
Failure to start after three attempts.

Electrical system

- Maintenance-free and anti-explosion battery
- Standard breaker
- ABB breaker (optional)
- ATS (optional)
- Battery charger (optional)
- GMS monitoring (optional)

Packing

- Wrapping film packaging
- Tray packaging
- plywood box packaging



Dimension:4000*1700*2000mm
Weight:4600kg
Fuel Tank:680L

Jiangsu Jianghao Generator Co.,Ltd

Address: No.1 Xixu Road, Medical High-tech Zone,
Taizhou city, Jiangsu, China

Contact Person: Anthony Feng

Email: jhfsale@jhgenerator.com

WhatsApp: +86 18652649673

