



## Genset

Model	JHW25-100GF
Voltage	400/230V
Frequency&Speed	50HZ 1500RPM
Prime Power	108kW/135kVA
Standby Power	119kW/149kVA

- **Engine:** Weichai WP6D132E200
- **Alternator:** Stamford/Leroy Somer  
/Hengsheng
- **Controller:** DeepSea/SmartGen  
/DEIF/ComAp

## General Engine Data

转速 Speed	发动机功率 Gross Engine Output		
	持续功率 kW COP kW	常用功率 kW PRP kW	备用功率 kW ESP kW
1500r/min	/	120	132

发动机类型 Engine model .....柴油机 Diesel Engine  
气缸/气门数量 N° of Cylinders / Valves ..... 6/12  
气缸分布型式 Cylinders arrangement .....直列 L-Type  
缸径×行程 ( mm ) Bore x Stroke ( mm ) .....105×130  
排量(L) Displacement(L) ..... 6.75  
燃油系统型式 Fuel System .....机械泵 Mechanical-Pump  
进气形式 Aspiration .....增压中冷 Turbocharged and aftercooled  
压缩比 Compression ratio ..... 18:1  
飞轮壳尺寸 Flywheel housing ..... SAE1  
飞轮尺寸 Flywheel ..... 11.5"  
飞轮齿圈齿数 N° of teeth on flywheel ring gear ..... 145  
飞轮转动惯量 (kg/m<sup>2</sup>) Inertia of flywheel (kg/m<sup>2</sup>) ..... 1.117  
曲轴转动惯量 (kg/m<sup>2</sup>) Inertia of crankshaft (kg/m<sup>2</sup>) ..... 0.27  
排放阶段 Emission standard ..... 无排放 Non  
发动机尺寸(长×宽×高) (mm) Overall Dimensions with radiator (L x W x H) (mm)  
.....1230×552×1058 ( 以外形图为准 The outer chart shall prevail )  
发动机干重 (kg) Engine dry weight (kg) ..... 625±50  
不带辅助启动装置时最低冷启动温度 (°C) Min.cold start temperature without auxiliary starting  
device(°C) ..... -10  
带辅助启动装置时最低冷启动温度 (°C) Min. cold start temperature with auxiliary starting device  
(°C) ..... -30  
包装尺寸 Packing measurement ( mm ) ..... 1637×1000×1258  
运输重量 Transport weight ( kg ) ..... 745±50

在涡轮增压器前允许的最大的进气温升(°C) Air intake temperature rise (°C) .....	15
清洁滤芯进气阻力 (kPa) Air intake restriction clean filter (kPa).....	≤3.5
脏滤芯进气阻力 (kPa) Air intake restriction dirty filter (kPa).....	≤6
额定工况下进气流量 (kg/h) Recommended air flow @ PRP (kg/h) .....	544
应急备用工况下进气流量 (kg/h) Recommended air flow @ ESP (kg/h).....	582
推荐最小进气管直径(mm) Min. diameter of intake pipe (mm).....	80
油底壳机油容量 (L) Oil capacity (L).....	20
怠速时机油压力 (kPa) Oil pressure in normal condition idle speed (kPa) .....	≥120
在额定转速下的机油压力 (kPa) Oil pressure in normal condition at rated speed .....	300-600
机油低报警压力 (kPa) Lowest oil pressure alarm (kPa) .....	120
机油低停机压力 (kPa) Lowest oil pressure shutdown(kPa) .....	120
机油最高温度(°C) Max. oil temperature (°C).....	105
机油流量 (L/min) Oil flow (L/min) .....	47
机油燃油消耗比 Oil fuel consumption ratio based on engine fuel consumption data .....	≤0.2%
电气系统电压 ( 负极接地 ) (V) Electrical system voltage (negative to ground) (V) .....	24
起动机功率(kW) Starter power (kW) .....	6
充电发电机额定电流 (A) Battery charger current (A) .....	35
启动回路最大电阻 (mΩ) Max. electric resistance of starting circuit (mΩ) .....	2
启动回路导线最小截面积(mm <sup>2</sup> ) Min. sectional area of wire (mm <sup>2</sup> ) .....	65-85
加热格栅工作电压(V)/电流(A) Heat The Grille Voltage(V)/Current(A) .....	/
喷油泵进油口最大进油阻力 (kPa) Max. restriction at fuel pump inlet (kPa) .....	20
喷油泵最大回油阻力 (kPa) Max. fuel return restriction (kPa) .....	20
燃油最高进油温度 (°C) Max. fuel inlet temperature (°C).....	50
供油流量 (kg/h) Fuel supply flow (kg/h).....	23.8-26.2

## Alternator

Pole No.	4-Pole	<ul style="list-style-type: none"> <li>✧ NEMAMG1.JIANGHAO,and ANSI standards compliance for temperature rise and motor starting.</li> <li>✧ Sustained short-circuit current of up to 300% of the rated current for up to 10 seconds.</li> <li>✧ Sustained short-circuit current enabling down stream circuit breakers to trip without collapsing the generator field.</li> <li>✧ Self-ventilated and dripproof construction.</li> </ul>
Exciter Type	Single bearing, Brushless, Self-excited	
Power factor	0.8	
Voltage adjust range	≅ 5%	
Insulation Grade	H	
Protection Grade	IP23/22	
Phase / wire	3 phase 4 wires	
✧	Superior voltage waveform from two-thirds Pitch windings and skewed stator.	
✧	Digital solid-state.volts-per-hertz voltage Regulator with +1% no-load to full-load regulation.	

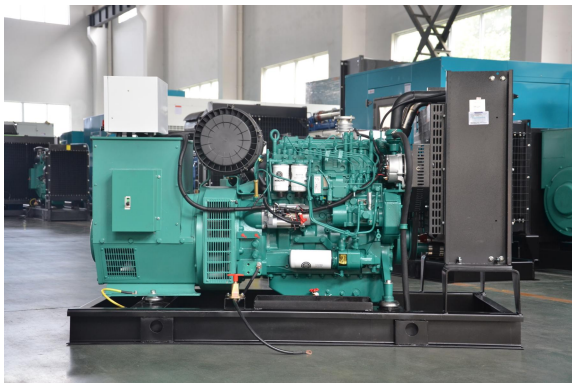


## Control Panel



**The control module gives digital readouts of:**

Generator voltage;  
Output frequency;  
Engine speed;  
Battery voltage;  
Engine hours run.



Dimension:2470\*830\*1450mm

Weight:1350kg



Dimension:3600\*1600\*1900mm

Weight:3200kg

Fuel Tank:550L

The **control panel** is an Digital Control Module suitable for a wide variety of single, diesel or gas, gen-set applications.

Monitoring an extensive number of engine parameters, the module will display warnings, shutdown and engine status information on the back-lit LCD screen and illuminated LEDs.

**The control module has indicators for failure information:**

Over speed/Low speed,  
Emergency stop  
Low oil pressure;  
High water temperature  
Failure to start  
Battery charger failure

**Automatic shutdown occurs under:**

Low engine oil pressure;  
High engine water temperature;  
Over speed/Low speed;  
Failure to start after three attempts.

## Electrical system

- Maintenance-free and anti-explosion battery
- Standard breaker
- ABB breaker (optional)
- ATS (optional)
- Battery charger (optional)
- GMS monitoring (optional)

## Packing

- Wrapping film packaging
- Tray packaging
- plywood box packaging

**Jiangsu Jianghao Generator Co.,Ltd**

Address: No.1 Xixu Road, Medical High-tech Zone,  
Taizhou city, Jiangsu, China

Contact Person: Anthony Feng

Email: [jhfsale@jhgenerator.com](mailto:jhfsale@jhgenerator.com)

WhatsApp: +86 18652649673

