



Genset

Model	JHW25-1000GF
Voltage	400/230V
Frequency&Speed	50HZ 1500RPM
Prime Power	990kW/1238kVA
Standby Power	1089kW/1361kVA

General Engine Data

- **Engine:** Baudouin 12M33D1210E200
- **Alternator:** Stamford/Leroy Somer
/Hengsheng
- **Controller:** DeepSea/SmartGen
/DEIF/ComAp

转速Speed r/min	发动机功率 Gross Engine Output		
	持续功率 kW COP kW	常用功率 kW PRP kW	备用功率 kW ESP kW
1500	/	1100	1210

发动机类型 Engine Type	柴油机 Diesel Engine
气缸/气门数量 N° of Cylinders / Valves	12/48
气缸分布型式 Cylinders arrangement	V 型 V-Type
缸径×行程 (mm) Bore x Stroke (mm)	150×185
排量(L) Displacement(L)	39.2
燃油系统型式 Fuel System	机械泵+电子调速器 Mechanical Pump+Electronic Speed Governor
进气形式 Aspiration	增压中冷 Turbocharging and intercooling
压缩比 Compression ratio	15
飞轮壳尺寸 Flywheel housing	SAE 0
飞轮尺寸 Flywheel	18"
飞轮齿圈齿数 N° of teeth on flywheel ring gear	194
飞轮转动惯量 (kg/m ²) Inertia of flywheel (kg/m ²)	7.18
曲轴转动惯量 (kg/m ²) Inertia of crankshaft (kg/m ²)	4.52
排放阶段 Emission standard	无排放 Non
发动机尺寸(长×宽×高) Overall Dimensions without radiator (L x W x H) (mm)	2524×1312×1731 (以外形图为准 The outer chart shall prevail)
发动机干重 (kg) Engine dry weight (kg)	3590
不带辅助启动装置时最低冷启动温度 (°C) Min.cold start temperature without auxiliary starting device(°C)	-5
带辅助启动装置时最低冷启动温度 (°C) Min. cold start temperature with auxiliary starting device (°C)	-10
包装尺寸(长×宽×高) Packing size (L x W x H) (mm)	2880×1710×2215
运输重量 Packaging quality(kg)	4268

喷油泵进油口最大进油阻力 (kPa) Max. restriction at fuel pump inlet (kPa)	13
喷油泵最大回油阻力 (kPa) Max. fuel return restriction (kPa)	15
燃油最高进油温度 (°C) Max. fuel inlet temperature (°C).....	45
供油流量 (L/h) Fuel supply flow (kg/h)	/
输油泵最小压力 (kPa) Min. pressure of fuel pump (kPa).....	35
燃油进油管最小直径 (mm) Min. diameter of inlet pipe (mm).....	12
燃油回油管最小直径 (mm) Min. diameter of return pipe (mm)	12
油底壳机油最小/最大容量 (L) Oil capacity Low / High (L).....	117/155
怠速时机油压力 (kPa) Oil pressure in normal condition idle speed (kPa)	≥ 200
在额定转速下的机油压力 (kPa) Oil pressure in normal condition at rated speed	400~650
机油压力低报警值(kPa) Lowest oil pressure alarm value (kPa)	200
机油压力低停机值(kPa) Lowest oil pressure shutdown value (kPa)	/
额定工况主油道内机油温度范围 The oil temperature range of the main oil passage under rated working condition (°C)	85~105
机油流量 (L/min) Oil flow (L/min)	390
额定工况机油燃油消耗比 Oil fuel consumption ratio based on engine fuel consumption data under rated working condition	≤0.3%
电气系统电压 (负极接地) (V) Electrical system voltage (negative to ground) (V)	24
起动机功率(kW) Starter power (kW)	10
充电发电机额定电流 (A) Battery charger current (A).....	55
启动回路最大电阻 (mΩ) Max. electric resistance of starting circuit (mΩ)	8
启动回路导线最小截面积(mm²) Min. sectional area of wire (mm²)	95
加热格栅工作电压(V)/电流(A) Heat The Grille Voltage(V)/Current(A)	24/196

Alternator

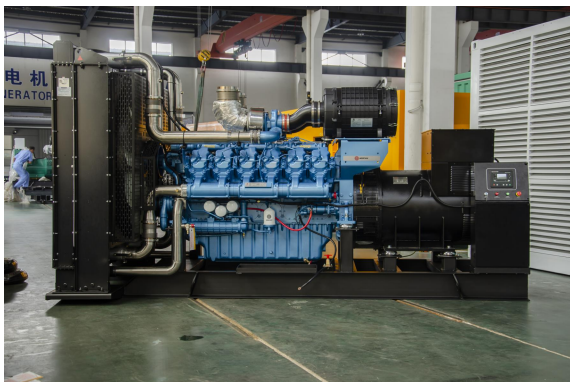
Pole No.	4-Pole	
Exciter Type	Single bearing, Brushless, Self-excited	
Power factor	0.8	✧ NEMAMG1.JIANGHAO,and ANSI standards compliance for temperature rise and motor starting.
Voltage adjust range	≅ 5%	✧ Sustained short-circuit current of up to 300% of the rated current for up to 10 seconds.
Insulation Grade	H	✧ Sustained short-circuit current enabling down stream circuit breakers to trip without collapsing the generator field.
Protection Grade	IP23/22	✧ Self-ventilated and dripproof construction.
Phase / wire	3 phase 4 wires	
✧ Superior voltage waveform from two-thirds Pitch windings and skewed stator.		
✧ Digital solid-state.volts-per-hertz voltage Regulator with +1% no-load to full-load regulation.		

Control Panel



The control module gives digital readouts of:

Generator voltage;
Output frequency;
Engine speed;
Battery voltage;
Engine hours run.



Dimension:4800*2000*2350mm

Weight:9300kg



Dimension:5800*2300*2500mm

Weight:13200kg

Fuel Tank Capacity:1200L

The **control panel** is an Digital Control Module suitable for a wide variety of single, diesel or gas, gen-set applications.

Monitoring an extensive number of engine parameters, the module will display warnings, shutdown and engine status information on the back-lit LCD screen and illuminated LEDs.

The control module has indicators for failure information:

Over speed/Low speed,
Emergency stop
Low oil pressure;
High water temperature
Failure to start
Battery charger failure

Automatic shutdown occurs under:

Low engine oil pressure;
High engine water temperature;
Over speed/Low speed;
Failure to start after three attempts.

Electrical system

- Maintenance-free and anti-explosion battery
- Standard breaker
- ABB breaker (optional)
- ATS (optional)
- Battery charger (optional)
- GMS monitoring (optional)

Packing

- Wrapping film packaging
- Tray packaging
- plywood box packaging

Jiangsu Jianghao Generator Co.,Ltd

Address: No.1 Xixu Road, Medical High-tech Zone,
Taizhou city, Jiangsu, China

Contact Person: Anthony Feng

Email: jhfsale@jhgenerator.com

WhatsApp: +86 18652649673

