



## Genset

Model	JHSL-500GF
Voltage	400/480V
Frequency&Speed	50HZ&60HZ
Prime Power	450kW/563kVA
Standby Power	500kW/624kVA

- **Engine: Mitsubishi S6R-PTA**
- **Alternator: Stamford/Leroy Somer /Hengsheng**
- **Controller: DeepSea/SmartGen /DEIF/ComAp**

## General Engine Data

Type	4-Cycle, Water Cooled
Aspiration	Turbo-Charged, After Cooler (Jacket water to Cooler)
Cylinder Arrangement	Inline
No. of Cylinders	6
Bore mm(in.)	170 (6.69)
Stroke mm(in.)	180 (7.09)
Displacement liter(ir <sup>3</sup> )	24.51 (1496)
Compression Ratio	14.0:1
Dry Weight - Engine only - kg(lb)	2300 (5072)
Wet Weight - Engine only - kg(lb)	2440 (5380)

### PERFORMANCE DATA

Steady State Speed Stability Band at any Constant Load		
Hydraulic (std.) or Electric Governor - %		±0.25 or better
Maximum Overspeed Capacity - rpm		2100
Moment of inertia of Rotating Components - kg·m <sup>2</sup> (lb·ft <sup>2</sup> )		38.26 (908.1)
(Includes Std. Flywheel)		
Cyclic Speed Variation with Flywheel at	1800rpm	1/164
	1500rpm	1/110
	1200rpm	1/76

### ENGINE MOUNTING

Maximum Bending Moment at Rear Face of Flywheel Housing - kg·m(lb·ft)	200 (1447)
---	------------

### AIR INLET SYSTEM

Maximum Intake Air Restriction (Includes piping)			
With Clean Filter Element - mm H <sub>2</sub> O (in. H <sub>2</sub> O)	_____	400	(15.7)
With Dirty Filter Element - mm H <sub>2</sub> O (in. H <sub>2</sub> O)	_____	635	(25.0)

### EXHAUST SYSTEM

Maximum Allowable Back Pressure - mm H <sub>2</sub> O (in. H <sub>2</sub> O)	600 (23.6)
--	------------

### LUBRICATION SYSTEM

Oil Pressure at Idle - kgf/cm <sup>2</sup> (psi)	2~3 (29~43)
at Rate Speed - kgf/cm <sup>2</sup> (psi)	5~6.5 (71~93)
Maximum Oil Temperature - °C(°F)	110 (230)
Oil Capacity of Standard Pan High - liter (U.S. gal)	80 (21.1)
Low - liter (U.S. gal)	50 (13.2)
Total System Capacity (Includes Oil Filter) - liter (U.S. gal)	100 (26.4)
Maximum Angle of Installation (Std. Pan)	Front Down 11.5°
(Engine Only)	Front Up 10°
	Side to Side 22.5°

## COOLING SYSTEM

Coolant Capacity (Engine only) - liter (U.S.gal)	50	(13.2)
Maximum External Friction Head at Engine Outlet - kgf/cm <sup>2</sup> (psi)	0.35	(5.0)
Maximum Static Head of Coolant above Crankshaft Center - m(ft)	10	(32.8)
Maximum Outlet Pressure of Engine Water Pump - kgf/cm <sup>2</sup> (psi)	2.6	(37.1)
Standard Thermostat (modulating) Range - °C(°F)	71 ~ 85	(160 ~ 185)
Maximum Coolant Temperature at Engine Outlet - °C(°F)	98	(208)
Minimum Coolant Expansion Space - % of System Capacity	10	
Maximum Coolant Temperature at Intercooler Inlet, TK type - °C(°F)		
Maximum Air Restriction on Discharge Side of Radiator and Fan-mm H <sub>2</sub> O(in.H <sub>2</sub> O)	10	(0.4)

## FUEL SYSTEM

Fuel Injector	Mitsubishi PS6 Type × 1
Maximum Suction Head of Feed Pump - mm Hg (in. Hg)	75 (3.0)
Maximum Static Head of Return & Leak Pipe - mm Hg (in.Hg)	150 (5.9)

## STARTING SYSTEM

Battery Charging Alternator - V-Ah	24-30
Starting Motor Capacity - V -kW	24-7.5
Maximum Allowable Resistance of Cranking Circuit - mΩ	2.5
Recommended Minimum Battery Capacity	
At 5°C (41°F) and above - Ah	200
Below 5°C(41°F) through - 5°C(23°F)	500

ITEM	UNIT	STAND-BY POWER			PRIME POWER			CONTINUOUS D		CONTINUOUS B	
		60Hz	50Hz	60Hz	60Hz	50Hz	60Hz	60Hz	50Hz	60Hz	50Hz
Engine Speed	rpm	1800	1500	1200	1800	1500	1200	1800	1500	1800	1500
No. of Cylinders		6									
Bore	mm (in.)	170 (6.69)									
Stroke	mm (in.)	180 (7.09)									
Displacement	liter (in. <sup>3</sup> )	24.51 (1496)									

## Alternator

Pole No.	4-Pole	<ul style="list-style-type: none"> <li>✧ NEMAMG1.JIANGHAO,and ANSI standards compliance for temperature rise and motor starting.</li> <li>✧ Sustained short-circuit current of up to 300% of the rated current for up to 10 seconds.</li> <li>✧ Sustained short-circuit current enabling down stream circuit breakers to trip without collapsing the generator field.</li> <li>✧ Self-ventilated and dripproof construction.</li> </ul>
Exciter Type	Single bearing, Brushless, Self-excited	
Power factor	0.8	
Voltage adjust range	≅ 5%	
Insulation Grade	H	
Protection Grade	IP23/22	
Phase / wire	3 phase 4 wires	
✧ Superior voltage waveform from two-thirds Pitch windings and skewed stator.		
✧ Digital solid-state.volts-per-hertz voltage Regulator with +1% no-load to full-load regulation.		



## Control Panel



**The control module gives digital readouts of:**

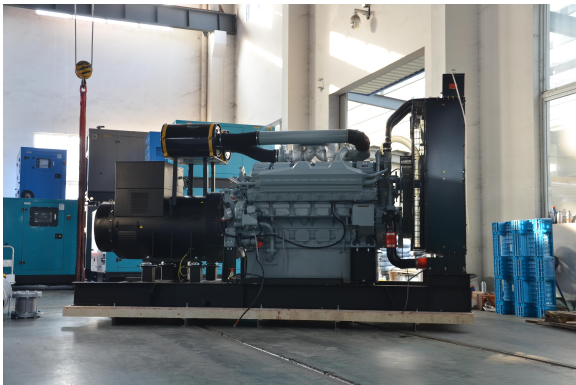
Generator voltage;  
Output frequency;  
Engine speed;  
Battery voltage;  
Engine hours run.

The **control panel** is an Digital Control Module suitable for a wide variety of single, diesel or gas, gen-set applications.

Monitoring an extensive number of engine parameters, the module will display warnings, shutdown and engine status information on the back-lit LCD screen and illuminated LEDs.

**The control module has indicators for failure information:**

Over speed/Low speed,  
Emergency stop  
Low oil pressure;  
High water temperature  
Failure to start  
Battery charger failure



Dimension:3600\*1600\*2300mm  
Weight:5000kg

**Automatic shutdown occurs under:**

Low engine oil pressure;  
High engine water temperature;  
Over speed/Low speed;  
Failure to start after three attempts.

## Electrical system

- Maintenance-free and anti-explosion battery
- Standard breaker
- ABB breaker (optional)
- ATS (optional)
- Battery charger (optional)
- GMS monitoring (optional)

## Packing

- Wrapping film packaging
- Tray packaging
- plywood box packaging



Dimension:4700\*2100\*2400mm  
Weight:7900kg  
Fuel Tank Capacity:1000L

**Jiangsu Jianghao Generator Co.,Ltd**

Address: No.1 Xixu Road, Medical High-tech Zone,  
Taizhou city, Jiangsu, China

Contact Person: Anthony Feng

Email: [jhfsale@jhgenerator.com](mailto:jhfsale@jhgenerator.com)

WhatsApp: +86 18652649673

