



Genset

Model	JHSL-1800GF
Voltage	400/480V
Frequency&Speed	50HZ&60HZ
Prime Power	1764kW/2205kVA
Standby Power	1950kW/2438kVA

- **Engine: Mitsubishi S16R2-PTAW**
- **Alternator: Stamford/Leroy Somer**
/Hengsheng
- **Controller: DeepSea/SmartGen**
/DEIF/ComAp

General Engine Data

Type	4-Cycle, Water Cooled	
Aspiration	Turbo-Charged, Aircooler (Fresh Water)	
Cylinder Arrangement	60°V	
No. of Cylinders	16	
Bore mm(in.)	170	(6.69)
Stroke mm(in.)	220	(8.66)
Displacement liter(ir ³)	79.90	(4876)
Compression Ratio	14.0:1	
Dry Weight - Engine only - kg(lb)	7750	(17089)
Wet Weight - Engine only - kg(lb)	8200	(18081)

PERFORMANCE DATA

Steady State Speed Stability Band at any Constant Load		
Electric Governor - %		±0.25 or better
Maximum Overspeed Capacity - rpm		1750
Moment of inertia of Rotating Components - kg·m ² (lb·ft ²)		32.92 (781)
(Includes Std. Flywheel)		
Cyclic Speed Variation with Flywheel at 1500rpm		1/210

ENGINE MOUNTING

Maximum Bending Moment at Rear Face of Flywheel Housing - kg·m(lb·ft)	450	(3256)
---	-----	--------

AIR INLET SYSTEM

Maximum Intake Air Restriction (Includes piping)		
With Clean Filter Element - mm H ₂ O (in. H ₂ O)	400	(15.7)
With Dirty Filter Element - mm H ₂ O (in. H ₂ O)	635	(25.0)

EXHAUST SYSTEM

Maximum Allowable Back Pressure - mm H ₂ O (in. H ₂ O)	600	(23.6)
--	-----	--------

LUBRICATION SYSTEM

Oil Pressure at Idle - kgf/cm ² (psi)	2	3	(29	43)
at Rated Speed - kgf/cm ² (psi)	4	6	(57	86)
Maximum Oil Temperature - °C(°F)	110		(230)	
Oil Capacity of Standard Pan				
High - liter (U.S. gal)	260		(68.7)	
Low - liter (U.S. gal)	200		(52.8)	
Total System Capacity (Includes Oil Filter) - liter (U.S. gal)	290		(76.6)	
Maximum External Friction Head at External Oil Cooler - kgf/cm ² (psi)	0.82		(11.7)	
Maximum Angle of Installation (Std. Pan)				
(Engine Only)	Front Down	6°		
	Front Up	6°		
	Side to Side	25°		

COOLING SYSTEM

Coolant Capacity of Jacket (Engine Only) - liter (U.S.gal)	157	(41.5)
Coolant Capacity of Air Cooler (Engine Only) - liter (U.S.gal)	33	(8.7)
Maximum External Friction Head at Engine Outlet - kgf/cm ² (psi)	0.35	(5.0)
Maximum Static Head of Coolant above Crankshaft Center - m(ft)	10	(32.8)
Standard Thermostat (modulating)Range of Jacket °C(°F)	71	85 (160 185)
Standard Thermostat (modulating)Range of Air cooler °C(°F)	42	55 (108 131)
Maximum Coolant Temperature at Engine Outlet °C(°F)	98	(208)
Minimum Coolant Expansion Space - % of System Capacity	10	
Maximum Coolant Temperature at Air cooler Inlet, PTAW type °C(°F) (at ambient 40°C)	65	(149)

FUEL SYSTEM

Fuel Injector	Mitsubishi PS8 Type × 2
Maximum Suction Head of Feed Pump - mm Hg (in. Hg)	75 (3.0)
Maximum Static Head of Return & Leak Pipe - mm Hg (in.Hg)	150 (5.9)

STARTING SYSTEM

Battery Charging Alternator - V-Ah	24-35
Starting Motor Capacity - V -kW	24-7.5×2
Maximum Allowable Resistance of Cranking Circuit - Ω	1.5
Recommended Minimum Battery Capacity	
At 5°C(41°F) and above - Ah	400
Below 5°C(41°F) through - 5°C(23°F)	600

ITEM	UNIT	STAND-BY POWER	PRIME POWER		
		50Hz	50Hz		
Engine Speed	rpm	1500	1500		
No. of Cylinders		16			
Bore	mm (in.)	170 (6.69)			
Stroke	mm (in.)	220 (8.66)			
Displacement	liter (in. ³)	79.9 (4876)			

Alternator

Pole No.	4-Pole
Exciter Type	Single bearing, Brushless, Self-excited

Power factor	0.8
Voltage adjust range	±5%
Insulation Grade	H
Protection Grade	IP23/22
Phase / wire	3 phase 4 wires

- ✧ Superior voltage waveform from two-thirds Pitch windings and skewed stator.
- ✧ Digital solid-state.volts-per-hertz voltage Regulator with +1% no-load to full-load regulation.

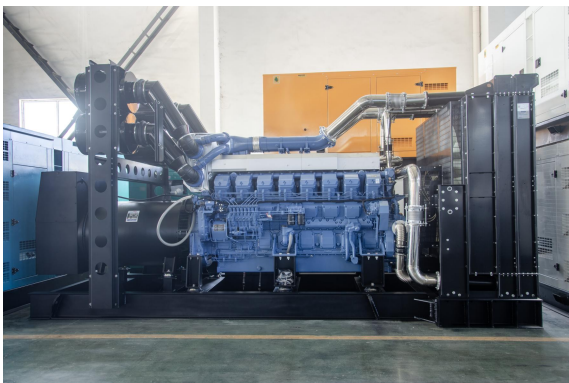
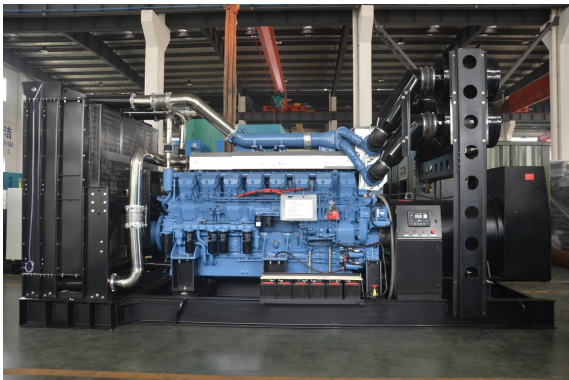
- ✧ NEMAMG1.JIANGHAO,and ANSI standards compliance for temperature rise and motor starting.
- ✧ Sustained short-circuit current of up to 300% of the rated current for up to 10 seconds.
- ✧ Sustained short-circuit current enabling down stream circuit breakers to trip without collapsing the generator field.
- ✧ Self-ventilated and dripproof construction.

Control Panel



The control module gives digital readouts of:

Generator voltage;
Output frequency;
Engine speed;
Battery voltage;
Engine hours run.



Dimension:6000*2600*3500mm

Weight:17200kg

Fuel Tank Capacity:1000-3000L

The **control panel** is an Digital Control Module suitable for a wide variety of single, diesel or gas, gen-set applications.

Monitoring an extensive number of engine parameters, the module will display warnings, shutdown and engine status information on the back-lit LCD screen and illuminated LEDs.

The control module has indicators for failure information:

Over speed/Low speed,
Emergency stop
Low oil pressure;
High water temperature
Failure to start
Battery charger failure

Automatic shutdown occurs under:

Low engine oil pressure;
High engine water temperature;
Over speed/Low speed;
Failure to start after three attempts.

Electrical system

- Maintenance-free and anti-explosion battery
- Standard breaker
- ABB breaker (optional)
- ATS (optional)
- Battery charger (optional)
- GMS monitoring (optional)

Packing

- Wrapping film packaging
- Tray packaging
- plywood box packaging

Jiangsu Jianghao Generator Co.,Ltd

Address: No.1 Xixu Road, Medical High-tech Zone,
Taizhou city, Jiangsu, China

Contact Person: Anthony Feng

Email: jhfsale@jhgenerator.com

WhatsApp: +86 18652649673

