



Genset

Model	JHSL-1600GF
Voltage	400/480V
Frequency&Speed	50HZ&60HZ
Prime Power	1516kW/1895kVA
Standby Power	1706kW/2132kVA

- **Engine: Mitsubishi S16R-PTAA2**
- **Alternator: Stamford/Leroy Somer /Hengsheng**
- **Controller: DeepSea/SmartGen /DEIF/ComAp**

General Engine Data

Type	4-Cycle, Water Cooled
Aspiration	Turbo-Charged, Air to Air Cooler
Cylinder Arrangement	60°V
No. of Cylinders	16
Bore mm(in.)	170 (6.69)
Stroke mm(in.)	180 (7.09)
Displacement liter(ir ³)	65.37 (3989)
Compression Ratio	13.5:1
Dry Weight - Engine only - kg(lb)	6443 (14207)
- Radiator & Piping - kg(lb)	1874 (4132)
Wet Weight - Engine only - kg(lb)	6820 (15038)
- Radiator & Piping - kg(lb)	2117 (4668)

PERFORMANCE DATA

Steady State Speed Stability Band at any Constant Load	
Hydraulic (std.) or Electric Governor - %	±0.25 or better
Maximum Overspeed Capacity - rpm	2100
Moment of inertia of Rotating Components - kg·m ² (lbf·ft ²)	80.83 (1918)
(Includes Std. Flywheel)	
Cyclic Speed Variation with Flywheel a	1800rpm 1/265
	1500rpm 1/178
	1200rpm 1/119

ENGINE MOUNTING

Maximum Bending Moment at Rear Face of Flywheel Housing - kg·m(lbf·ft)	450 (3256)
--	------------

AIR INLET SYSTEM

Maximum Intake Air Restriction (Includes piping)	
With Clean Filter Element - mm H ₂ O (in. H ₂ O)	400 (15.7)
With Dirty Filter Element - mm H ₂ O (in. H ₂ O)	635 (25.0)

EXHAUST SYSTEM

Maximum Allowable Back Pressure - mm H ₂ O (in. H ₂ O)	600 (23.6)
--	------------

LUBRICATION SYSTEM

Oil Pressure at Idle - kgf/cm ² (psi)	2~3 (29~43)
at Rate Speed - kgf/cm ² (psi)	5~6.5 (71~93)
Maximum Oil Temperature - °C(°F)	110 (230)
Oil Capacity of Standard Pan High - liter (U.S. gal)	200 (52.8)
Low - liter (U.S. gal)	140 (37.0)
Total System Capacity (Includes Oil Filter) - liter (U.S. gal)	230 (60.8)
Maximum Angle of Installation (Std. Pan) Front Down	5°
(Engine Only) Front Up	5°
Side to Side	22.5°

COOLING SYSTEM

Coolant Capacity - Engine - liter (U.S.gal)	170	(44.9)
- Radiator & Piping - liter (U.S.gal)	243	(64.2)
Maximum External Friction Head at Engine Outlet - kgf/cm ² (psi)	0.35	(5.0)
Maximum Static Head of Coolant above Crankshaft Center - m(ft)	10	(32.8)
Maximum Outlet Pressure of Engine Water Pump - kgf/cm ² (psi)	2	(28.6)
Standard Thermostat (modulating)Range- °C(°F)	71~85	(160~185)
Maximum Coolant Temperature at Engine Outlet-°C(°F)	98	(208)
Minimum Coolant Expansion Space - % of System Capacity	10	
Maximum Cooling Air Temperature at Air to Air Cooler Inlet, TAA type-°C(°F)	40	(104)
Maximum Air Restriction on Discharge Side of Radiator and Fan-mm H ₂ O(in.H ₂ O)	40	(1.6)

FUEL SYSTEM

Fuel Injector	Mitsubishi PS8 Type × 2
Maximum Suction Head of Feed Pump - mm Hg (in. Hg)	75 (3.0)
Maximum Static Head of Return & Leak Pipe - mm Hg (in.Hg)	150 (5.9)

STARTING SYSTEM

Battery Charging Alternator - V-Ah	24-30
Starting Motor Capacity - V -kW	24-7.5×2
Maximum Allowable Resistance of Cranking Circuit - mΩ	1.5
Recommended Minimum Battery Capacity	
At 5°C(41°F) and above - Ah	300
Below 5°C(41°F) through - 5°C(23°F)	600

ITEM	UNIT	STAND - BY POWER			PRIME POWER		
		60Hz		50Hz	60Hz		50Hz
Engine Speed	rpm	1800		1500	1800		1500
No. of Cylinders		16					
Bore	mm (in.)	170 (6.69)					
Stroke	mm (in.)	180 (7.09)					
Displacement	liter (in. ³)	65.37 (3989)					

Alternator

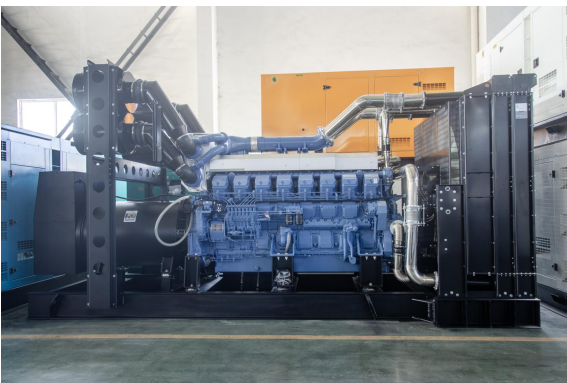
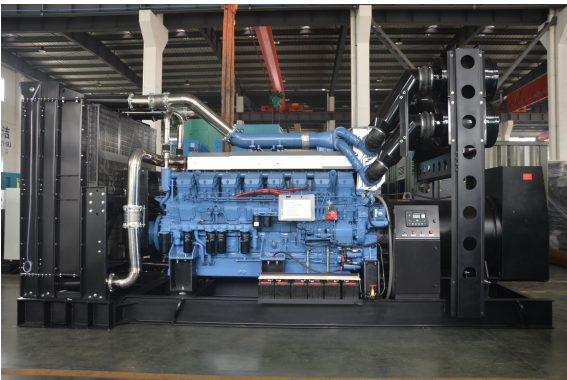
Pole No.	4-Pole	<ul style="list-style-type: none"> ✧ NEMAMG1.JIANGHAO,and ANSI standards compliance for temperature rise and motor starting. ✧ Sustained short-circuit current of up to 300% of the rated current for up to 10 seconds. ✧ Sustained short-circuit current enabling down stream circuit breakers to trip without collapsing the generator field. ✧ Self-ventilated and dripproof construction.
Exciter Type	Single bearing, Brushless, Self-excited	
Power factor	0.8	
Voltage adjust range	≅5%	
Insulation Grade	H	
Protection Grade	IP23/22	
Phase / wire	3 phase 4 wires	
<ul style="list-style-type: none"> ✧ Superior voltage waveform from two-thirds Pitch windings and skewed stator. ✧ Digital solid-state.volts-per-hertz voltage Regulator with +1% no-load to full-load regulation. 		

Control Panel



The control module gives digital readouts of:

Generator voltage;
Output frequency;
Engine speed;
Battery voltage;
Engine hours run.



Dimension:5900*2500*3500mm

Weight:14400kg

Fuel Tank Capacity:1000-3000L

The **control panel** is an Digital Control Module suitable for a wide variety of single, diesel or gas, gen-set applications.

Monitoring an extensive number of engine parameters, the module will display warnings, shutdown and engine status information on the back-lit LCD screen and illuminated LEDs.

The control module has indicators for failure information:

Over speed/Low speed,
Emergency stop
Low oil pressure;
High water temperature
Failure to start
Battery charger failure

Automatic shutdown occurs under:

Low engine oil pressure;
High engine water temperature;
Over speed/Low speed;
Failure to start after three attempts.

Electrical system

- Maintenance-free and anti-explosion battery
- Standard breaker
- ABB breaker (optional)
- ATS (optional)
- Battery charger (optional)
- GMS monitoring (optional)

Packing

- Wrapping film packaging
- Tray packaging
- plywood box packaging

Jiangsu Jianghao Generator Co.,Ltd

Address: No.1 Xixu Road, Medical High-tech Zone,
Taizhou city, Jiangsu, China

Contact Person: Anthony Feng

Email: jhfsale@jhgenerator.com

WhatsApp: +86 18652649673

